



1. Creevymore (Sl. 1), from North-West.



2. Cartronplank (Sl. 2). The back of the gallery, from North.



3. Bunduff (Sl. 3), from North-West.



4. Bunduff (Sl. 4). The court, entrance to the gallery and facade, from East.





1. Creevykeel (Sl. 5). The gallery and court, from West.



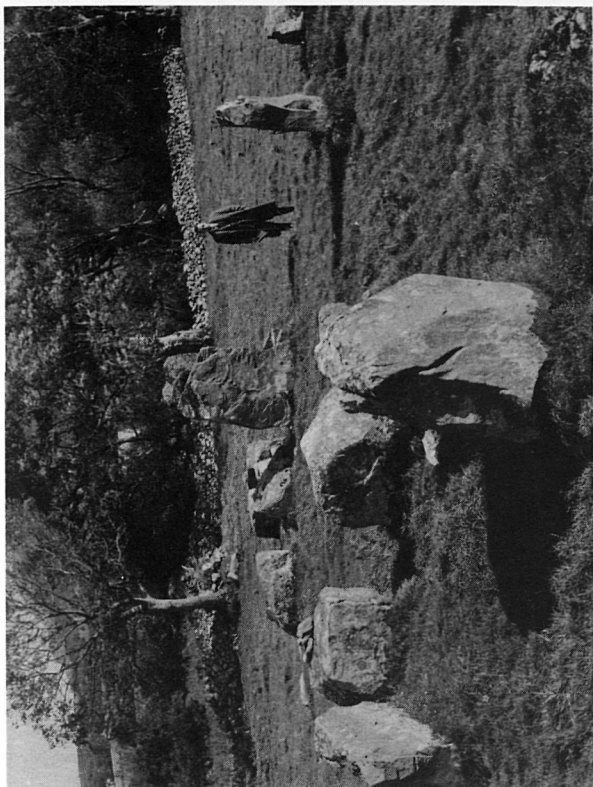
2. Creevykeel (Sl. 5). The court, from East.



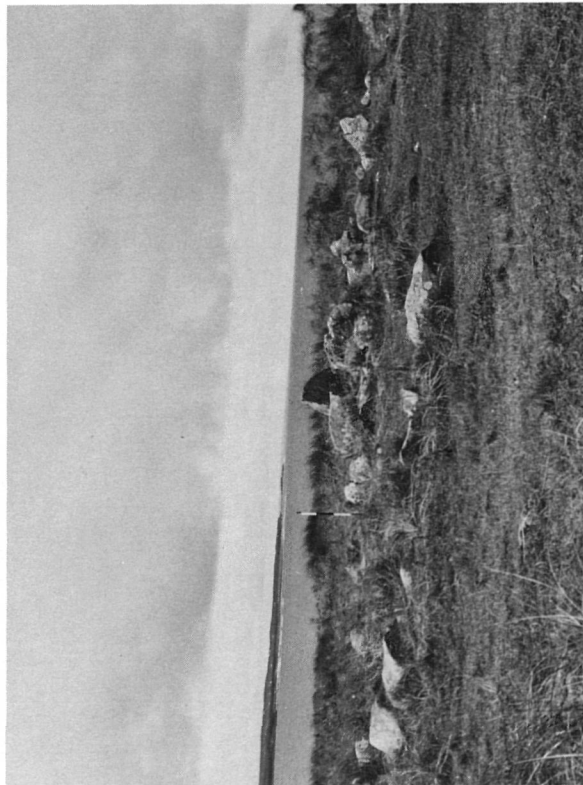




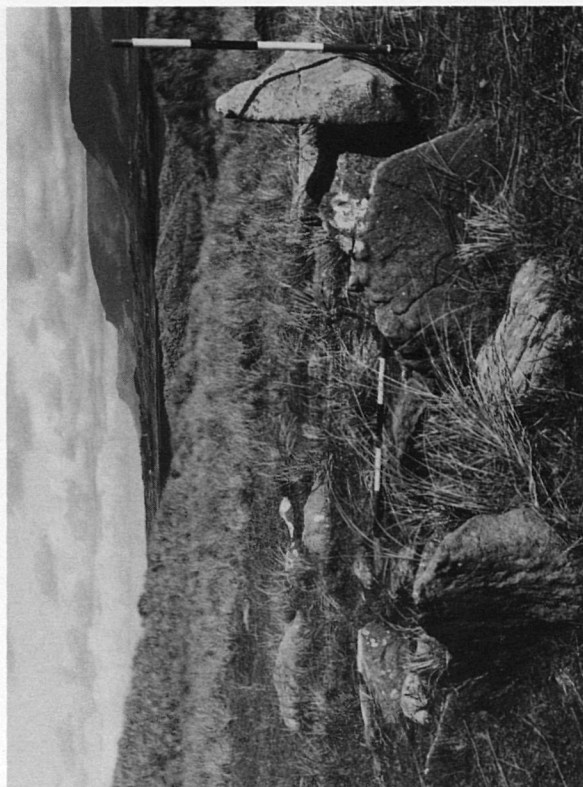
1. Creevymore (Sl. 7), from North-West.



2. Gortnaleck (Sl. 10), from West.



3. Streedagh (Sl. 8), from South-East.

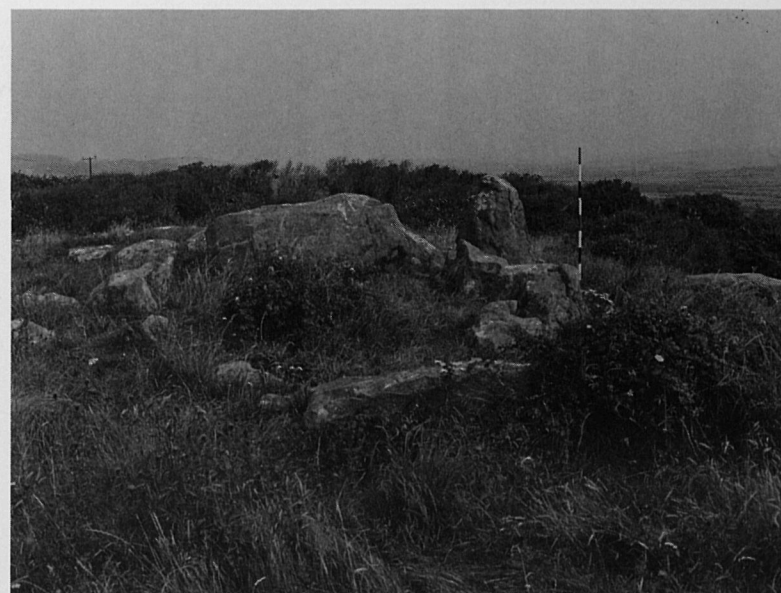


4. Streedagh (Sl. 8). The gallery, from West.





1. Streedagh (Sl. 9), from East.



2. Streedagh (Sl. 9), from West.



3. Ardnaglass Upper (Sl. 12). The chamber, from South.



4. Ardnaglass Upper (Sl. 12). The cairn, from South.







1. Ardnaglass Upper (Sl. 11), from South.



2. Drinaghan (Sl. 13). The gallery, from South. The ranging-pole stands between the entrance jambs.



3. Gorteen (Sl. 14), from West.



4. Gortnahoula (Sl. 15), from South.





1. Moneylahan (Sl. 16). The inner end of the court and the gallery at the northern end of the cairn, from North.



2. Ballygilgan (Sl. 21), from South-West.



3. Cloghbole (Sl. 18), from South.



4. Cloghbole (Sl. 18), from the back of the western gallery.







1. Cloghcor (Sl. 19), from North-West.



2. Cloghcor (Sl. 19), from North.



3. Kilsellagh (Sl. 25), from West.



4. Coolbeg (Sl. 22), from North-West.





1. Drum East (Sl. 23), from South-West.



2. Drumkilsellagh (Sl. 24), from South-West.



3. Carranduff (Sl. 29), from South-East.



4. Kilsellagh (Sl. 28), from South.







1. Kilsellagh (Sl. 27). The eastern subsidiary chamber, from North-West.



2. Kilsellagh (Sl. 27). The western subsidiary chamber, from South.



3. Kilsellagh (Sl. 27). The stones at the west end of the monument, from West.

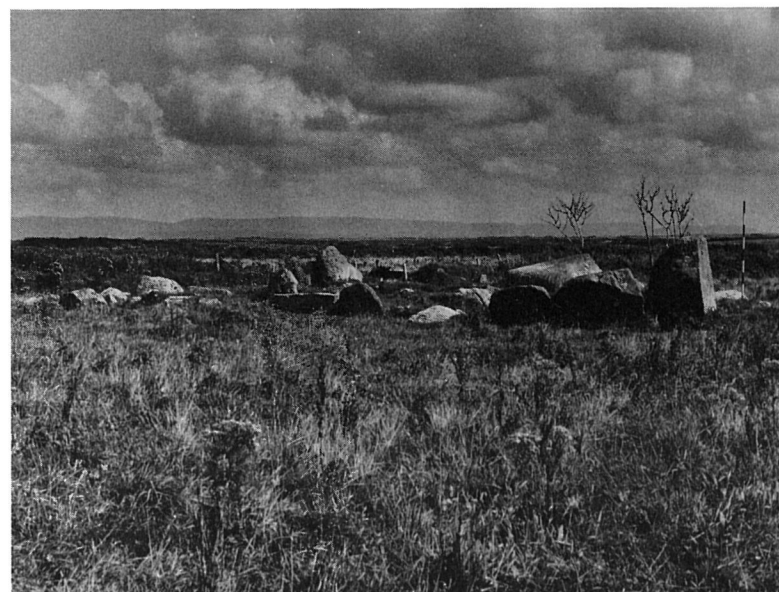


4. Castlegal (Sl. 26), from South-West.





1. Carrowpadeen (Sl. 31), from North-West.



2. Carrowpadeen (Sl. 31), from South-East.



3. Carrownrush (Sl. 30), from South-West.



4. Ardabrone (Sl. 41), from North-East.





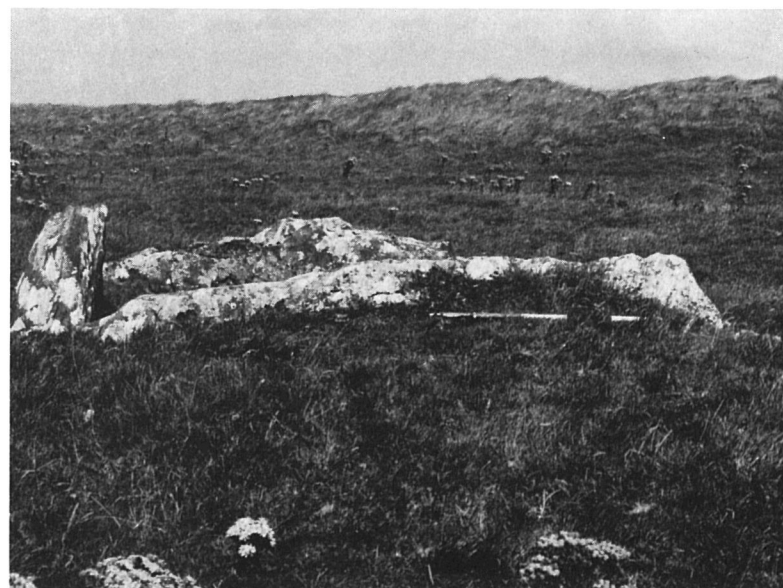
1. Ballynahowna (Sl. 35). The gallery from North-East.



2. Ballynahowna (Sl. 36), from South.



3. Killaspugbrone (Sl. 38), from East.



4. Killaspugbrone (Sl. 38), from South.







1. Halfquarter (Sl. 43), from North-East.



2. Formoyle (Sl. 46), from South-West.



3. Cannaghanally (Sl. 49), from East.

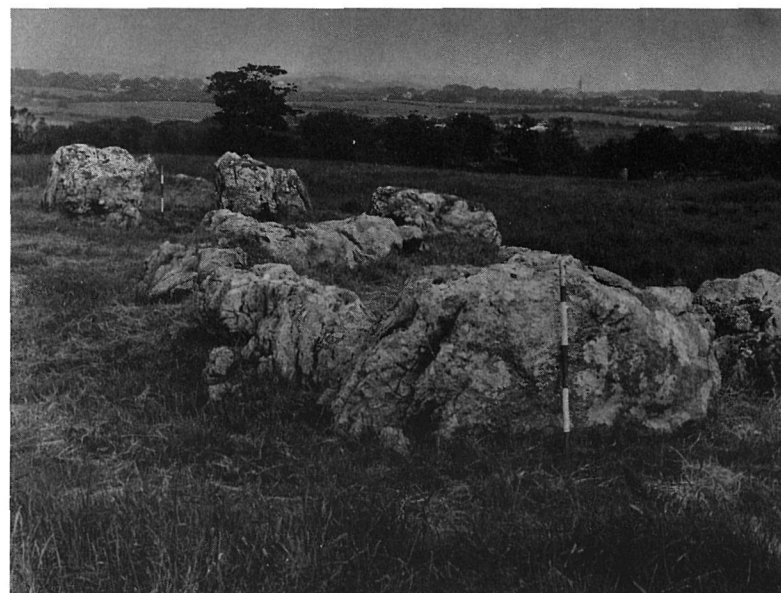


4. Grange Beg (Sl. 58). The North-East end of the structure, from South-West.





1. Cummeen (Sl. 44). The western gallery from inside the entrance of the eastern gallery.



2. Cummeen (Sl. 44), from West.



3. Primrosegrange (Sl. 45), from North.



4. Primrosegrange (Sl. 45), from North-East.







1. Deer Park or Magheraghanrush (Sl. 47). The entrances to the eastern galleries, from West.



2. Deer Park or Magheraghanrush (Sl. 48), from North-West.

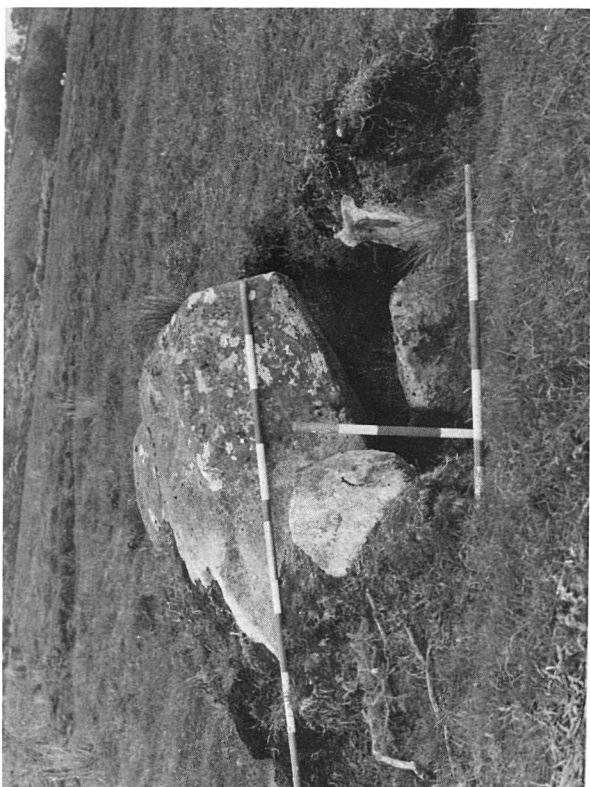


3. Culleens (Sl. 50), from West.



4. Culleens (Sl. 50), from East.

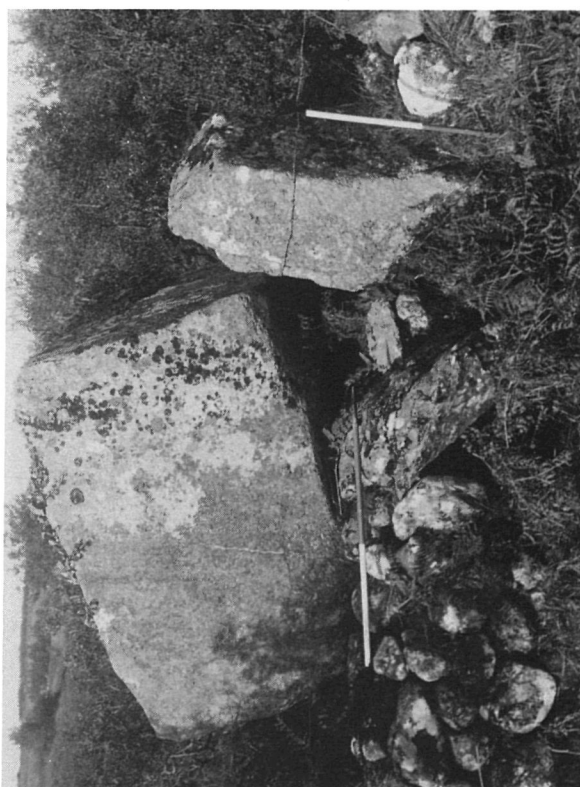




1. Camcuill (Sl. 51), from East.



2. Camcuill (Sl. 51), from North.



3. Knockanbaun (Sl. 52), from East.



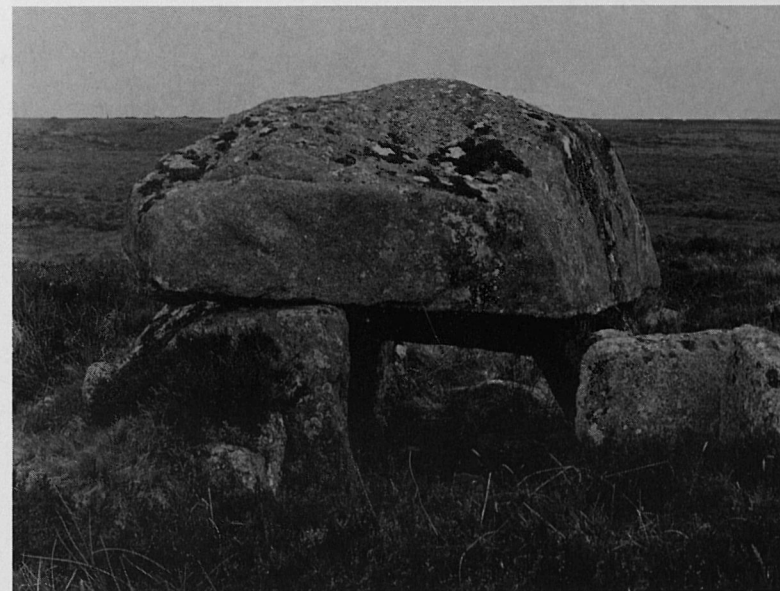
4. Tawnatruffaun (Sl. 53). Back chamber, from North-West.







1. Caltragh (Sl. 54), from West.



2. Caltragh (Sl. 55), from West.



3. Tawnatruffaun (Sl. 56), from South-East.



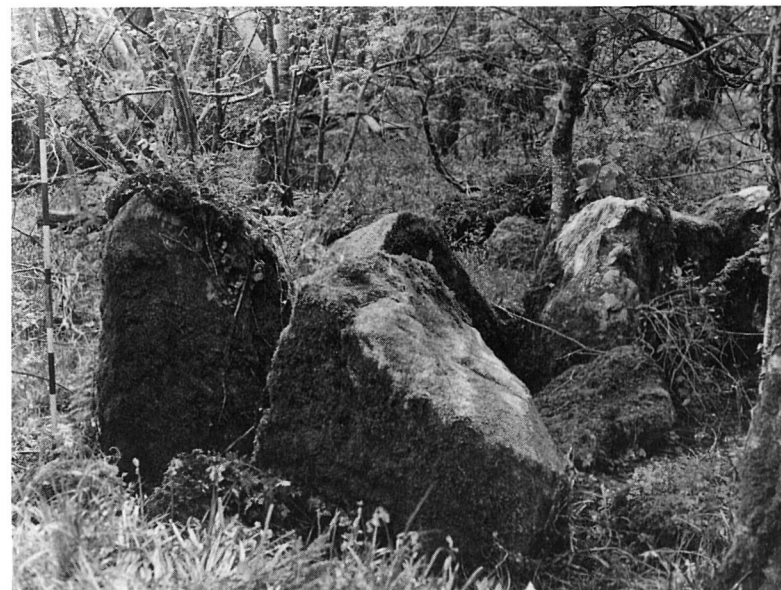
4. Tawnatruffaun (Sl. 56), from South-West.







1. Fortland (Sl. 32). The entrance to the gallery, from North.



2. Fortland (Sl. 33), from North-East. The ranging-pole stands next to the southern entrance jamb.



3. Belville (Sl. 59), from North.



4. Lugdoon (Sl. 62), from South-West.





1. Barnacoghil (Sl. 60), from South-West.



2. Barnacoghil (Sl. 61), from South-West.



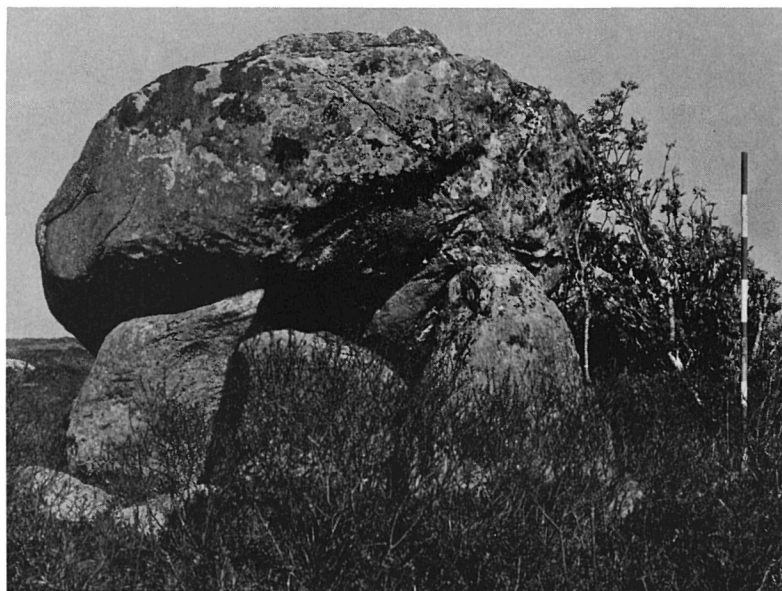
3. Ballinphull (Sl. 63), from West.



4. Doonbeakin (Sl. 57), from South-East.







1. Crowagh (Sl. 65), from East.



2. Crowagh (Sl. 65), from South-West.



3. Carrowconor (Sl. 69), from West.



4. Doonflin Upper (Sl. 64), from South.

